



**United Way
of the Wabash Valley**

Wait!? Why is United Way Here?

How a United Way transformed from fund-raiser to collaborator working on Substance Use Disorder.

February 23, 2021

What We Heard



United Way
of the Wabash Valley

Our community wants....



My children, my kids are in the streets in
Parents who suffer from these issues don't
this is a real problem in the neighborhood
provide a good home life, and lead the
beginning of the breakdown of the family
kids to make the same poor decisions.
removing them from danger?
-- a child at local youth center parent
-- social worker

What We Heard



United Way
of the Wabash Valley



Drugs

The sale and abuse of drugs have created a health and safety problem in our entire community.



Economic Decline and Jobs

There is a lack of family-sustaining employment or an ability to attract it.



Safe Community

Crime, violence and drug use lead to an overall unsafe feeling in many areas and neighborhoods.



Community Pride

Lack of pride for our community has become a deep-rooted trait that shows in our attitudes of how we treat our community.

What We Heard



United Way
of the Wabash Valley

Our community wants....



*How can we have this many agencies in town and still have this many people broken down and depressed and all these problems.
-- concerned parent*



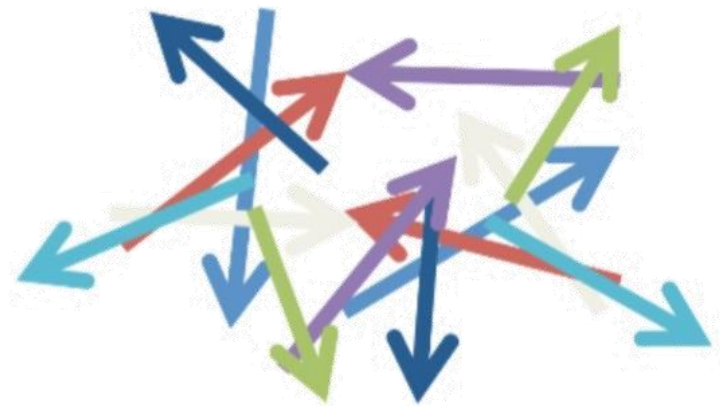
United Way
of the Wabash Valley

BECOMING THE UNITED WAY OUR COMMUNITY NEEDS

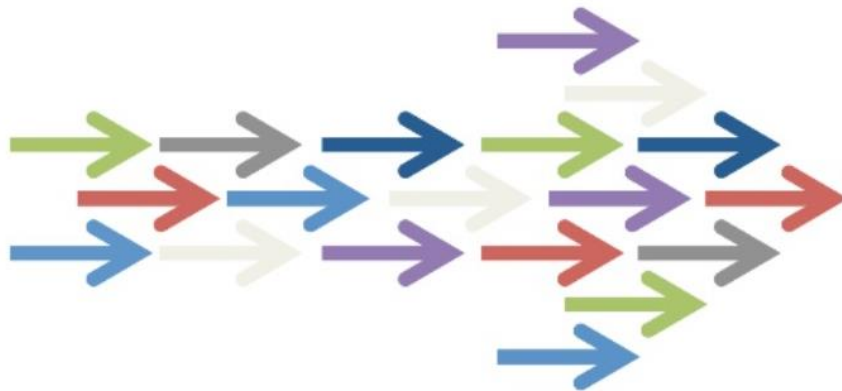
“Our United Way must become a strong community problem solver focused on the most critical social issues...”

- Funders select **individual grantees**
- Organizations **work separately** and **compete**
- Corporate and government sectors are often **disconnected** from foundations and nonprofits
- Evaluators attempt to measure an organization's **isolated impact**
- Large scale change is assumed to depend on **scaling organizations**

Isolated Impact



Collective Impact



- Problems solving and solutions arise from **interaction of many partners within larger system**
- **Cross-sector alignment** with government, nonprofit, philanthropic and corporate sectors as partners
- **Organizations actively coordinating** their action and sharing lessons learned
- All working toward the **same goal** and measuring the **same indicators of success**

01 | A Common Agenda

02 | Shared Measurement System

03 | Mutually Reinforcing Activities

04 | Continuous Communication

05 | Backbone Support Organization



UNITED

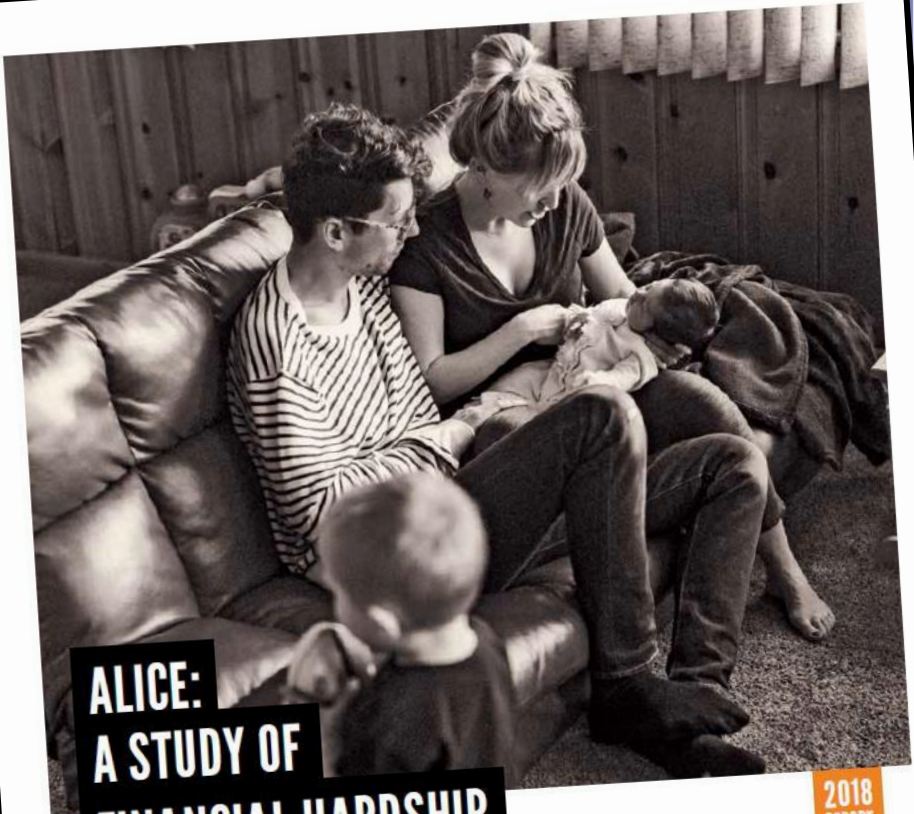
WE FIGHT POVERTY



Join the Fight to...

**Move 10,000 families out of
financial struggles and into STABILITY!**

A Asset
L Limited
I Income
C Constrained
E Employed




**ALICE:
A STUDY OF
FINANCIAL HARDSHIP
IN INDIANA**

**2018
REPORT**

LIVE UNITED

ALICE[®] is an acronym for Asset Limited, Income Constrained, Employed.

The United Way ALICE Project is a collaboration of United Ways in Connecticut, Florida, Hawai'i, Idaho, Indiana, Iowa, Louisiana, Maryland, Michigan, New Jersey, New York, Ohio, Oregon, Texas, Virginia, Washington, and Wisconsin.



BECOMING THE UNITED WAY OUR COMMUNITY NEEDS

- Strategy shift from...

Transactional model

(fundraise \Rightarrow fund-allocate)

to...

Relational model

(collective impact using designated “councils”)

UNITE



Bring together donors, volunteers, businesses, nonprofits, government, and those in need.

STRATEGIZE



Gather the most relevant data and best ideas to identify solutions for our community.

TACKLE



Invest in programs, lead initiatives, and inspire others to join our efforts.

EVALUATE



Measure and report results to ensure that we make progress toward our Bold Goal.



Join the Fight to...

Move 10,000 families out of financial struggles and into STABILITY!

Health



Substance Use Disorders Council

Education



Success By 6 Council

Financial Stability



Financial Management Council

Community Building



Strong Neighborhoods Council



Community Health Council



Youth Success Council



Job Skills Council

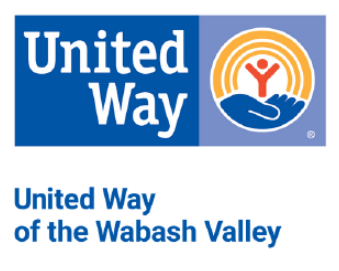


Volunteer



Substance Use Disorders Council

Substance Use Disorders Impact Council



Development Team Members:

Volunteers who are passionate and/or experts in the field of substance use disorders. Responsible for developing ideas and initiatives.

Jennifer Hutchens - Co-Chair - *Hutchens & Associates*

Jaymie Barrett-Wood - Co-Chair - *FSA Counseling*

Matt Cardin - *TH Police Department*

Angie Daugherty - *Sullivan County Probation Office*

Dr. Robert Ehresman, MD - *Union Health*

Tina Elliott - *Indiana Rural Health Association*

Brandon Halleck - *Chances and Services for Youth*

Lynn Hughes - *Hamilton Center*

Kathy Knust - *Clay Community Schools*

Vicki Kosowsky - *Retired Saint Mary-of-the-Woods College*

Josh Michael - *Odyssey House Recovery Residence*

Becky Myers - *Valley Professionals Community Health*

Jim Palmer - *Vigo County Drug Task Force*

Peggy Parsons-Palmer - *Vermillion County Health Dept.*

James Ramer - *Vigo County Veterans Treatment Court*

Dana Simons - *Next Step Foundation*

Dr. Randy Stevens, MD - *Union Health*

Jennifer Todd - *Indiana State University*

Myra Wilkey - *Mental Health America WCI*

Joni Wise - *Vigo County Health Dept.*



Substance Use Disorders Council

Substance Use Disorders Impact Council



United Way
of the Wabash Valley

Vision

Our community recognizes substance use as a public health issue that is preventable and treatable. Those suffering are met with dignity and respect in the absence of stigma and prejudice, and each community embraces recovery and a drug-free, healthy Wabash Valley.

Mission

Promote & support effective evidence-based prevention, treatment, and recovery programs and initiatives.

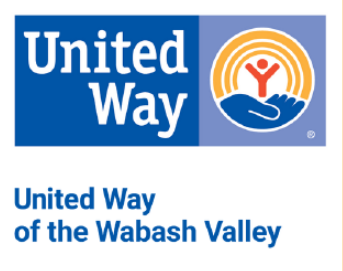
Goal

Reduce our community-wide prevalence of substance use disorders.



Substance Use Disorders Council

Substance Use Disorders Impact Council



Strategies

Growth of Treatment/Recovery Providers

There's not enough beds.

Development of Resources for a Full Continuum of Care

It takes a village.

Expand Practical Life-Assistance Recovery Supports

Recovery is hard if you don't have a home or a job.

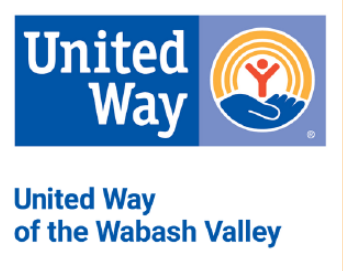
Prevention Strategy for Youth

We have to get to the kids before they start.



Substance Use Disorders Council

Substance Use Disorders Impact Council



Measurements

Substance-Use-Related Arrests

We are working with each of our six county sheriff's departments to secure monthly reports on substance use-related arrests. The data will be compiled and reported via a dashboard.

Substance-Use-Related DCS Child Removal Cases

We are working to establish a relationship with Indiana and Illinois DCS to secure a monthly or quarterly report on Substance-Use-Related removal cases by our service area counties.

Indiana Youth Survey Substance Use Statistics

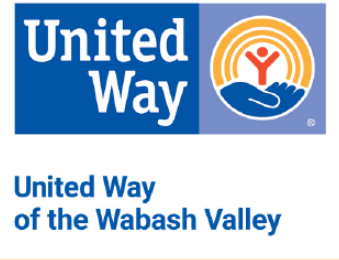
We will be sharing the survey data, including the Mean Age of First Time Use of Alcohol, Tobacco, and Other Drugs and the Percentage Reporting Monthly Use of Alcohol, Tobacco and Other Drugs.





Substance Use Disorders Council

Substance Use Disorders Impact Council



Substance Use Disorder Related Arrests by Month
UWWV Service Counties of Clay, Parke, Sullivan, Vermillion and Vigo





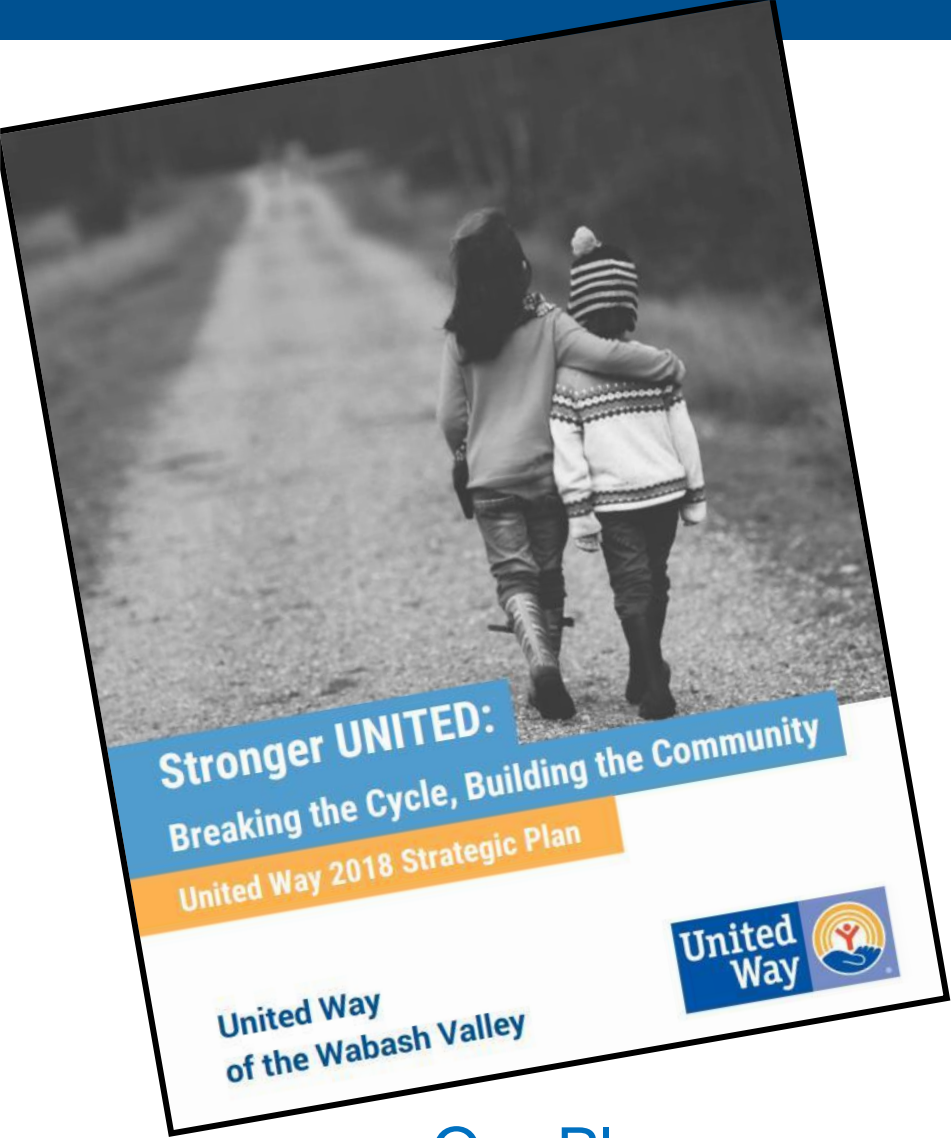
HRSA FEDERAL RURAL OPIOID RESPONSE IMPLEMENTATION GRANT

Council membership comes together to secure **\$1,000,000** of federal grant dollars for:

- *Case manager and counselors in Vermillion county*
- *9 new health and social service professionals*
- *Three new peer recover centers*
- *Two new recover residences*
- *Over 2,000 students receiving prevention programming*
- *Nine new permanent drug take-back sites*



Substance Use Disorders Council



[Our Plan](http://uwwwv.org)
uwwwv.org



[ALICE](http://uwwwv.org/alice)
uwwwv.org/alice